

# Stance

**HIGH PERFORMANCE**COLLECTION

---

Interactive Card



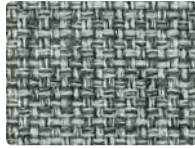
**MAYER**FABRICS



**LEGACY**  
471-007 Gravel



**HAVEN**  
472-037 Gravel



**LEGACY**  
471-046 Cloud



**HAVEN**  
472-026 Iron



**LEGACY**  
471-016 Slate



**ARCADE**  
AC-017 Latte



**EDITOR**  
WC920-017 Oatmeal



**BALANCE**  
BA-006 Metal



**EDITOR**  
WC920-006 Mineral



**BALANCE**  
BA-017 Stone



**ARCADE**  
AC-016 Pinball



**SCOUT**  
470-004 Sky



**ARCADE**  
AC-010 Driftwood



**EDITOR**  
WC920-000 Mushroom



**CAROUSEL**  
CR-007 Mineral



**SCOUT**  
470-016 Steel



**CENTRIC**  
WC979-004 Denim



**EDITOR**  
WC920-016 Slate



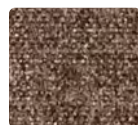
**ARCADE**  
AC-036 Smoke



**GATSBY**  
WC978-046  
Light Grey



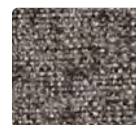
**GATSBY**  
WC978-017  
Fawn



**GATSBY**  
WC978-000  
Mink



**GATSBY**  
WC978-056  
Dew



**GATSBY**  
WC978-016  
Charcoal



**GATSBY**  
WC978-006  
Bitumen

Additional colors are available. Please refer to the Mayer Fabrics website.



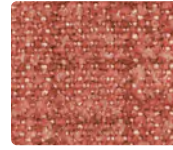
**LEGACY**  
471-002 Topaz



**HAVEN**  
472-002 Butterscotch



**LEGACY**  
471-000 Shore



**HAVEN**  
472-001 Coral



**LEGACY**  
471-008 Jam



**ARCADE**  
AC-002 Popcorn



**EDITOR**  
WC920-002 Topaz



**SCOUT**  
470-007 Flax



**CENTRIC**  
WC979-001 Blossom



**CAROUSEL**  
CR-000 Harbor



**EDITOR**  
WC920-001 Blush



**ARCADE**  
AC-011 Watermelon



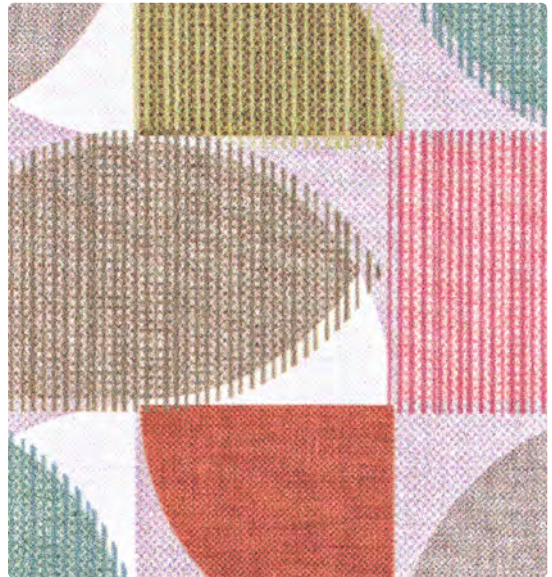
**ARCADE**  
AC-009 Penny



**BALANCE**  
BA-009 Copper



**SCOUT**  
470-002 Brass



**CAROUSEL**  
CR-001 Rose Quartz



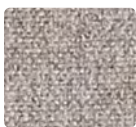
**CENTRIC**  
WC979-002 Saffron



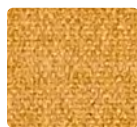
**BALANCE**  
BA-016 Thistle



**EDITOR**  
WC920-005 Plumberry



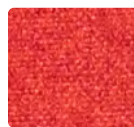
**GATSBY**  
WC978-036  
Dapper



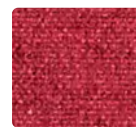
**GATSBY**  
WC978-002  
Topaz



**GATSBY**  
WC978-019  
Tangelo



**GATSBY**  
WC978-011  
Tomato



**GATSBY**  
WC978-001  
Ruby



**GATSBY**  
WC978-008  
Plum



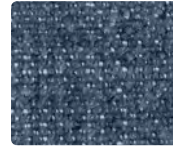
**LEGACY**  
471-003 Grass



**HAVEN**  
472-003 Seafoam



**LEGACY**  
471-024 Lake



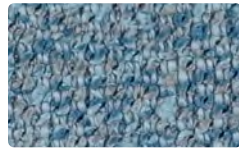
**HAVEN**  
472-034 Denim



**LEGACY**  
471-004 Cobalt



**ARCADE**  
AC-023 Menthol



**EDITOR**  
WC920-004 Water



**SCOUT**  
470-024 Admiral



**CENTRIC**  
WC979-014 Ink



**CAROUSEL**  
CR-003 Seaglass



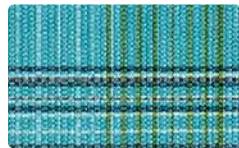
**ARCADE**  
AC-014 Sky



**BALANCE**  
BA-004 Denim



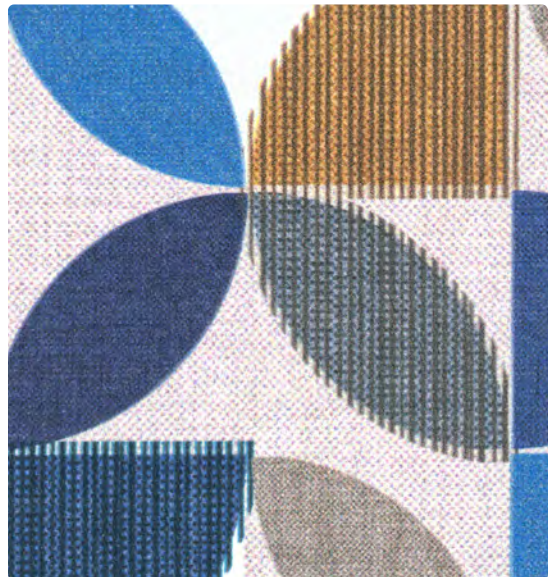
**ARCADE**  
AC-024 Laguna



**BALANCE**  
BA-014 Sea



**SCOUT**  
470-013 Everglade



**CAROUSEL**  
CR-004 Bluebird



**CENTRIC**  
WC979-003 Meadow



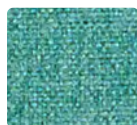
**BALANCE**  
BA-026 Grey Mist



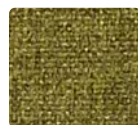
**EDITOR**  
WC920-014 Ink



**GATSBY**  
WC978-023  
Eucalyptus



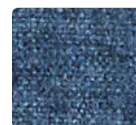
**GATSBY**  
WC978-043  
Aquamarine



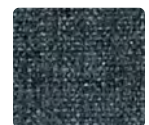
**GATSBY**  
WC978-003  
Cactus



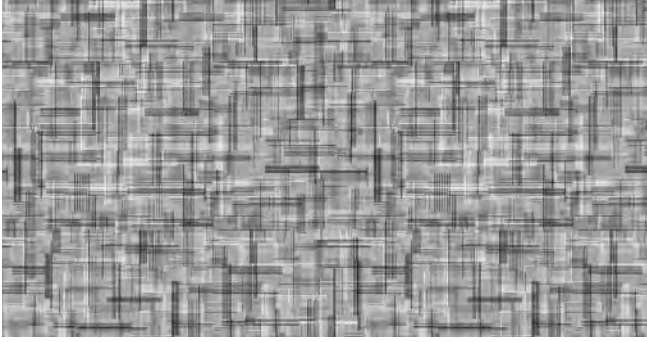
**GATSBY**  
WC978-053  
Aegean



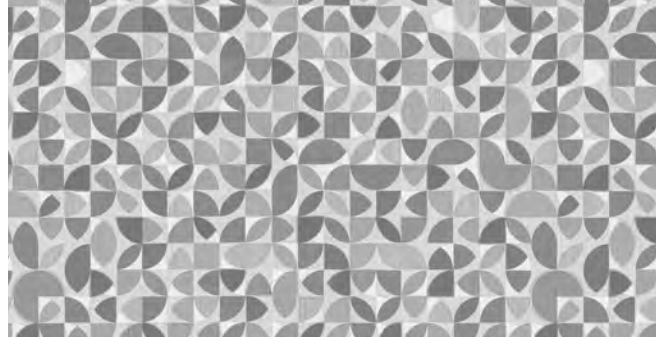
**GATSBY**  
WC978-014  
Indigo



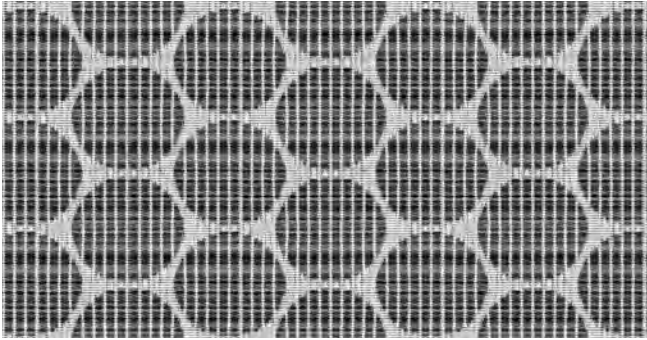
**GATSBY**  
WC978-004  
Midnight



BALANCE – Repeat: 23" H, 23.5" V



CAROUSEL – Repeat: 27" H, 27.375" V



CENTRIC – Repeat: 2.5" H, 1.375" V

# Technical Information

## High Performance Collection

Pattern 54"	Content and Backing	Certifications	Weight/ Linear Yd.	Pattern Repeat	Finish	Abrasion Wyzenbeek	Light- Fastness	Flammability	Cleaning Code	Grade
<b>ARCADE</b> <i>Directional</i>	63% Polyurethane Polycarbonate - PVC Free / 2% Silicone face, 35% Polyester backing	GREENGUARD	19 oz.	Non-Matching	WRITE AWAY® - Soil & Stain Resistant Top Coat with Ink Resistant Technology	1,000,000 <sup>^</sup> Double Rubs	300 hours	Cal. 117-2013 NFPA 260/UFAC Class 1	WS, BC, CFC	5
<b>BALANCE</b> <i>Directional</i>	80% Vinyl - Phthalate Free face, 20% Polyester backing	GREENGUARD	28 oz.	23" H, 23.5" V	Soil & Stain Resistant Top Coat with Ink Resistant Technology	1,300,000 <sup>^</sup> Double Rubs	650 hours	Cal. 117-2013 NFPA 260/UFAC Class 1 BIFMA	W, BC, CFC	3
<b>CAROUSEL</b> <i>Directional</i>	62% Polyurethane Polycarbonate - PVC Free / 3% Silicone face, 35% Polyester backing	GREENGUARD	16.5 oz.	27" H, 27.375" V	WRITE AWAY® - Soil & Stain Resistant Top Coat with Ink Resistant Technology	100,000 <sup>^</sup> Double Rubs	200 hours	Cal. 117-2013 NFPA 260/UFAC Class 1	WS, BC, CFC	7
<b>CENTRIC</b> <i>Directional</i>	81% Polyester, 19% Post-Consumer Recycled Polyester Backing: Crypton®	GREENGUARD Gold	23.216 oz.	2.5" H, 1.375" V	Crypton® with Antimicrobial Silver Ion Technology	102,000 <sup>^</sup> Double Rubs	40 hours	Cal. 117-2013 NFPA 260/UFAC Class 1	W, C, BC	5
<b>EDITOR</b> <i>Directional</i>	100% Polyester Backing: Crypton®	GREENGUARD Gold	24.39 oz.	Random Match	Crypton® with Antimicrobial Silver Ion Technology	100,000 <sup>^</sup> Double Rubs	40 hours	Cal. 117-2013 NFPA 260/UFAC Class 1	W, C, BC	4
<b>GATSBY</b> <i>Directional</i>	100% Polyester Backing: Crypton®	GREENGUARD Gold	24.3 oz.	None	Crypton® with Antimicrobial Silver Ion Technology	100,000 <sup>^</sup> Double Rubs	40 hours	Cal. 117-2013 NFPA 260/UFAC Class 1	C, BC	3
<b>HAVEN</b> <i>Directional</i>	92% Polyester, 6% Polyurethane, 2% Silicone Backing: Fluid Barrier (Supreen) Polyurethane	GREENGUARD Gold	22 oz.	Non-Matching	Supreen (Silicone) - PFC/PFOA Free	100,000 <sup>^</sup> Double Rubs	40 hours	Cal. 117-2013 NFPA 260/UFAC Class 1	WS, BC	3
<b>LEGACY</b>	94% Polyester, 4% Polyurethane, 2% Silicone Backing: Fluid Barrier (Supreen) Polyurethane	GREENGUARD Gold	21.5 oz.	None	Supreen (Silicone) - PFC/PFOA Free	100,000 <sup>^</sup> Double Rubs	40 hours	Cal. 117-2013 NFPA 260/UFAC Class 1	WS, BC	2
<b>SCOUT</b> <i>Directional</i>	91% Polyester, 7% Polyurethane, 2% Silicone Backing: Fluid Barrier (Supreen) Polyurethane	GREENGUARD Gold	17 oz	0.275" H, 0.275" V	Supreen (Silicone) - PFC/PFOA Free	100,000 <sup>^</sup> Double Rubs	40 hours	Cal. 117-2013 NFPA 260/UFAC Class 1	WS, BC	2

### REDUCED ENVIRONMENTAL IMPACT

These products are GREENGUARD Certified or GREENGUARD Gold Certified for low chemical and particle emissions to UL standard UL 2818 and may contribute to LEED certification.

No FR Additives

**Arcade, Balance, Carousel, Haven, Legacy, Scout**  
No Antimicrobial/ Antibacterial Additives

### CARE AND CLEANING INFORMATION

W: Water-Based Cleaner      WS: Water/Solvent Cleaner

C: Crypton Cleaning      CFC: Coated Fabrics Cleaning – Refer to Mayer website for complete cleaning info.

BC: Bleach Cleanable – 1 part bleach, 9 parts water = 10% bleach, 90% water solution. **Do not clean/disinfect fabric for longer than 10 minutes using the 10% bleach solution. Always rinse promptly with clean water after applying the bleach solution. Failure to do so will void any and all warranties.**

### DYE TRANSFER DISCLAIMER

Certain clothing and accessory dyes (such as those used on denim jeans) may migrate to lighter colors. This phenomenon is increased by humidity and temperature and is irreversible. Mayer Fabrics will not assume responsibility for dye transfer caused by external contaminants. Please check compatibility when using this product in combination with painted or varnished surfaces.

### ADDITIONAL INFORMATION

<sup>^</sup>Abrasion test results exceeding ACT Performance Guidelines are not an indicator of product lifespan. Multiple factors affect fabric durability and appearance retention.

<sup>\*</sup>A multi-use fabric that can be used for upholstery, panels, wrapped walls, and acoustic.

Warranty: Please refer to the Mayer website for warranty information by pattern.

Custom Colors: All patterns can be custom colored. Minimum yardage applies.

Digital Swatch Card Color Matching: Due to color variations on different monitors and color printers, actual swatch colors may vary slightly. Please request a memo sample from Mayer Fabrics to ensure proper color representation.

Complete and current product information available at [mayerfabrics.com](http://mayerfabrics.com).



These fabrics meet or exceed these ACT performance guidelines.  
<sup>\*</sup>Certification Marks owned by ACT<sup>\*</sup>

©2022  
SH-PCD MF0922

# Stance

# MAYER FABRICS

45 Goodrich Drive, Kitchener, ON, N2C 0B8  
T 1.877.395.2623 F 1.877.395.6270  
[www.stancehealthcare.com](http://www.stancehealthcare.com)

T 800.428.4415      [mayerfabrics.com](http://mayerfabrics.com)  
500 S. Kitley Ave. Indianapolis, IN 46219